
Gorillas, Rhinos, Chimps & the Nile
Small Group Safari
Bwindi | Murchison Falls National Park
9 Days | 8 Nights

WILD FRONTIERS
travel **AFRICA**



Embark on a journey showcasing the diverse landscapes and wildlife of Uganda.

Encounter endangered mountain gorillas in their natural habitat in Bwindi Impenetrable Forest. Enjoy a boat cruise to the Mabamba Swamps, home to the elusive Shoebill. Continue onto the majestic Murchison Falls, stopping to trek Rhinos on the way. Enjoy game drives, exceptional birdlife, chimpanzee tracking and Nile River cruises.

Small group safari, min 2 & max 7 guests

[**Click here to view your Digital Itinerary**](#)

Scheduled departure dates: 06 September 2025/ 15 February 2026 / 18 September 2026

Accommodation	Destination	Meals	Duration
Best Western Premier Garden Hotel Entebbe	Entebbe	Breakfast	1 Night
Buhoma Lodge	Bwindi Impenetrable Forest National Park	Full Board including drinks	3 Nights
Best Western Premier Garden Hotel Entebbe	Entebbe	Breakfast	1 Night
Paraa Safari Lodge	Murchison Falls National Park	Full Board	3 Nights

Brief itinerary:

Day 1	Meet and greet inside Entebbe airport. Transfer to Best Western Entebbe for overnight.
Day 2	Transfer to the airport for your flight to Bwindi (Kihikihi) - overnight at Buhoma Lodge*. Optional forest walk/cultural visit.
Day 3	Gorilla trekking may be done on day 3 or 4, depending on what date permits are purchased for. If you would like to trek twice, enquire at time of booking – additional permits will need to be pre-purchased. Optional community walk/forest walk/birding. Overnight Buhoma.
Day 4	Gorilla trekking. Overnight Buhoma Lodge.
Day 5	Fly Kihikihi to Entebbe, transfer to hotel, overnight Best Western. Afternoon Mabamba Swamps (looking for Shoebill and other birdlife) Dinner at hotel or in town, own cost.
Day 6	Meet your guide. Drive to Ziwa Rhino Sanctuary, for guided rhino tracking. Continue to Murchison Falls National Park. Top of the Falls walk. Overnight Paraa Safari Lodge.
Day 7	Murchison Falls – game drives / Nile boat cruise to the foot of the Falls. Overnight Paraa Safari Lodge.
Day 8	Murchison Falls – Optional Budongo Chimp trekking (am). Game drives. Overnight Paraa Safari Lodge.
Day 9	Return drive to Entebbe. Please do not book an INTERNATIONAL FLIGHT BEFORE 19h00.

Detailed itinerary:

Day 1: Best Western Premier Garden Hotel, Entebbe

On arrival at Entebbe International Airport, a friendly Wild Frontiers representative will meet you and transfer you to your hotel.

Set on the shores of Lake Victoria, Entebbe is a relaxed town that's easy to explore on foot or by local boda bodas (motorbike taxis). Browse colourful markets or take a leisurely boat cruise on Lake Victoria.

Just minutes from the airport, Best Western Premier Garden Hotel sits next to Victoria Mall and close to Lake Victoria. Enjoy international dishes at the Garden Restaurant, relax at the terrace bar or coffee shop, and take a dip in the outdoor pool. With 51 modern ensuite rooms, free Wi-Fi and all the comforts you need, it's the perfect start to your Ugandan adventure.

Overnight: Best Western Garden Hotel

Day 2: Buhoma Lodge, Bwindi Impenetrable Forest

This morning, a scenic light aircraft flight takes you to Kihikihi airstrip—just over an hour—followed by a 90-minute drive through local villages and winding mountain roads to Bwindi Impenetrable Forest, a UNESCO World Heritage Site.



Bwindi is Uganda's most biologically diverse forest and one of East Africa's richest ecosystems. It's home to over 120 mammal species, 345 bird species, 200 types of butterflies, and 160 tree species—and shelters roughly half of the world's remaining endangered Mountain Gorillas.

Tucked at the edge of the forest, Buhoma Lodge is one of only two lodges located inside the national park gate and offers the ultimate base for your once-in-a-lifetime Gorilla trek. Built with sustainable materials and full of character, the lodge's elevated lounge, bar and dining area serve up hearty multi-course meals and stunning views over the forest canopy. A crackling fireplace sets the tone for cosy evenings.

Ten spacious, eco-friendly chalets offer privacy and comfort. Wake to birdsong and monkey chatter, sip coffee on your verandah and take in sweeping views of the forest. With the trek start point just steps away, even the gorillas occasionally drop by—while the resident L'Hoest's monkeys are regulars in the garden.

Overnight: Buhoma Lodge [View iBrochure](#)



Day 3: Gorilla Trekking & Buhoma Lodge, Bwindi Impenetrable Forest

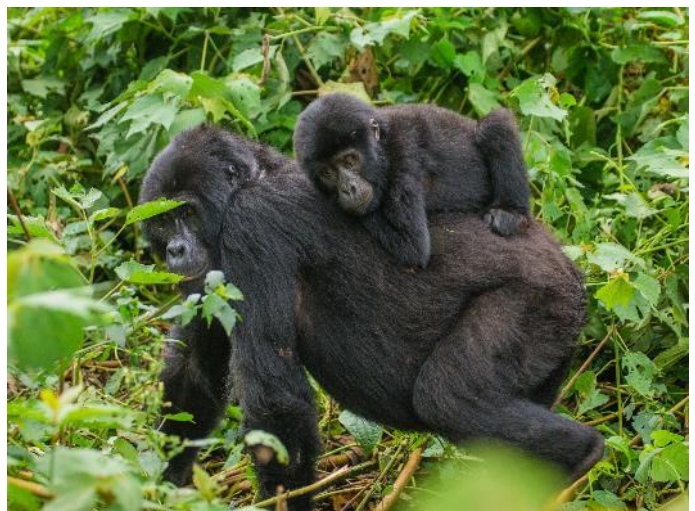
Coming face to face with a mountain gorilla is a rare encounter—and one of Africa's wildlife experiences that's hard to sum up in mere words. Accompanied by experienced guides and trackers, you'll set off early for a trek through the dense rainforest, navigating steep slopes in search of your allocated gorilla family.

Trekking can be strenuous, lasting anywhere from 45 minutes to 8 hours, often in hot, high-altitude conditions. Hiring a local porter is highly recommended—they'll lighten your load and enrich your experience. While sightings can't be guaranteed, the success rate is over 95%.

Once found, you'll spend a magical hour observing the gorillas up close. Time flies—so take a few photos, then soak up the experience fully.

Permits are typically secured for Buhoma or Ruhija regions, on day 3 or 4, depending on availability. Some treks start with a road transfer—offering the bonus of exploring more of this beautiful region.

Return to Buhoma for a well-earned complimentary massage or spend time exploring the local Bwindi community.



Overnight: [Buhoma Lodge](#) [View iBrochure](#)

Day 4: Buhoma Lodge, Bwindi Impenetrable Forest National Park

Today, you have the option to embark on another thrilling gorilla trek or indulge in a day of leisure exploring the captivating Bwindi area. Opt for a community village walk, or take a serene forest walk to enjoy the outstanding birdlife and tranquil surroundings. You could also visit [Ride for a Woman](#), a fascinating community project with local activities including basket weaving, traditional cooking and cycling tours on offer (additional cost).

Please note that additional permits must be pre-purchased, so inform us when booking if you wish to trek twice.

Overnight: [Buhoma Lodge](#) [View iBrochure](#)

Day 5: Best Western Premier Garden Hotel Entebbe, Entebbe

After breakfast, transfer to Kihikihi airstrip for your flight back to Entebbe, then onto your hotel.

This afternoon, head out on a thrilling boat trip to Mabamba Swamp in search of the elusive Shoebill — a must for serious birders. This vast wetland on the shores of Lake Victoria is home to over 260 bird species and offers one of the best chances to spot this rare, prehistoric-looking bird.

Hop on our 12-seater speedboat from Banga Beach for a 30–40-minute ride to the swamp, where you'll switch to a dug-out canoe to silently explore the channels. The full experience takes around 3–4 hours and is best timed for early morning or late afternoon, when Shoebills are most active.



Overnight: Best Western Premier Garden Hotel Entebbe

Day 6: Paraa Safari Lodge, Murchison Falls National Park

After breakfast, meet your safari guide and depart to Ziwa Rhino Sanctuary for a guided rhino tracking experience. Continue onto the spectacular Murchison Falls National Park.

Straddling the Victoria Nile at the edge of the Albertine Rift, this park is home to the thunderous Murchison Falls — where the Nile crashes 45 metres through a narrow gorge, transforming from wild rapids to a calm, sweeping river that flows into Lake Albert. Expect elephants, giraffes, and buffalo along the riverbanks, with hippos, crocs and birdlife always on show.

Take a guided walk to the Top of the Falls, where the Nile's raw power is on full display. The trail (approx. 45 mins, moderate fitness required) leads to breathtaking views and a refreshing spray — including a view of the lesser-known “Independence” falls.

Settle into Paraa Safari Lodge, where tastefully furnished rooms with private balconies and en-suite bathrooms overlook the Nile River. The Explorer's Bar is the perfect spot to unwind with a drink and share the day's stories.

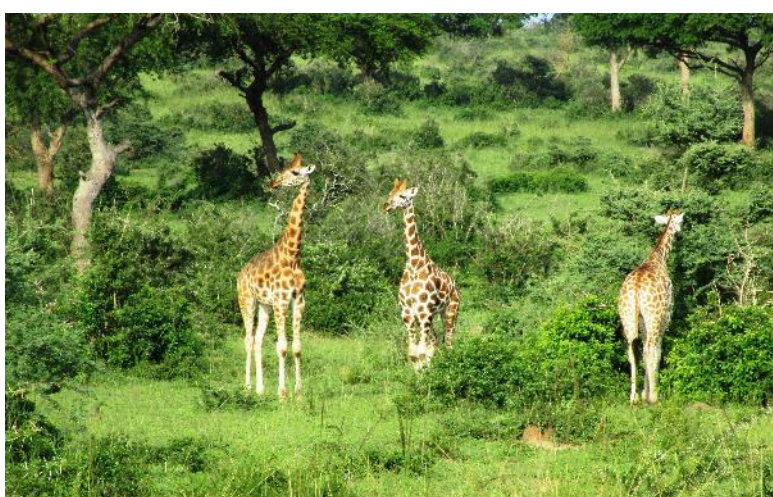
Overnight Paraa Safari Lodge.



Day 7: Paraa Safari Lodge, Murchison Falls National Park

Kick off the day with an early morning game drive through Murchison Falls National Park. The game here is surprisingly rich — elephants, buffalo, giraffes, antelope and lion roam the savannah.

In the afternoon, set off on a thrilling Nile cruise to the base of the falls. Watch the mighty cascade thunder through the gorge, and keep an eye out for hippos, crocs and colourful array of birdlife along the riverbank.



Overnight Paraa Safari Lodge.

Day 8: Paraa Safari Lodge, Murchison Falls National Park

After breakfast, head to Budongo Forest, just outside Murchison Falls National Park. Home to around 90 habituated chimpanzees, this half-day chimp tracking offers the rare chance to spend an hour up close with these remarkable primates in their natural habitat once you've located them. Round off the rest of the day with a game drive.



Overnight Paraa Safari Lodge.

Day 9: End of Itinerary

Return after breakfast to Entebbe for your flight back home.

Package price:

2025: 06 Sep	USD 5694 per person sharing USD 900 single room supplement
2026: 15 Feb / 18 Sep	USD 5875 per person sharing USD 1000 single room supplement
Gorilla & Chimpanzee permits excluded	USD 800 per person (Gorilla) International Passports USD 500 per person (Gorilla) African Citizens USD 130 per person Budongo Chimp permit USD 230 per person Budongo Chimp Habituation

***NB Permit rates are subject to change without notice, dependent on prices issued by Uganda Wildlife Authority (UWA). Permit pricing is currently valid until June 2026, awaiting further rates from UWA for travel after this date.**

We accept children of 16 years and older on our scheduled departures (with an adult/guardian). This has been implemented out of courtesy to other guests.

Included:

- VIP Meet & Greet
- Small group safari, min 2 and max 7 guests
- Return airport transfers - Entebbe
- 2 nights at Best Western Premier Garden Hotel Entebbe including breakfast
- Return domestic flights from Entebbe to Kihhi on a scheduled flight
- Return transfers Kihhi/ Buhoma
- 3 nights at Buhoma Lodge including all meals, soft drinks and local beers, spirits & house wines.
- 4x4 safari vehicle with English speaking local driver/guide to Murchison
- Bottled water in safari vehicle
- Ziwa Rhino Tracking
- Top of the Falls Walk
- Bottom of the Falls Cruise
- Game Drives in Murchison Falls
- 3 nights accommodation at Paraa Safari Lodge including all meals.
- All park entrance fees
- Community fees and contribution to the [Future Generations Trust](#)
- Full liability insurance cover & 24 hour emergency contact

Excluded:

- Gorilla & Chimpanzee permits
- All international flights and airport taxes
- Health requirements
- Personal expenses such as porters, drinks, tips, visas and travel insurance
- Services/activities/meals not included above

TRAVEL INSURANCE: Is compulsory for all guests travelling with Wild Frontiers.

HEALTH REQUIREMENTS:

Yellow fever inoculation is compulsory & malaria prophylactics are recommended. For gorilla trekking it is imperative that you are healthy and free of any disease or virus – officials do have the right to refuse entry if you are found to have or show any signs of communicable illnesses. Should you opt to spend time participating in any UWEC Wildlife Integration programme, you may require additional inoculations and health clearances.

VISA REQUIREMENTS:

Your passport must have a **minimum of at least two full clear pages for visas and stamps and be valid for more than 6 months** from the date of entry into Uganda. **Most passports need a single-entry visa (cost US\$55).**

Visas cannot be obtained on arrival. You must apply and pay for them online at <https://visas.immigration.go.ug> **at least two weeks before your arrival.**



© Copyright WILD FRONTIERS

*All prices are subject to change due to rate of exchange fluctuation or any unforeseen price increase.
Terms & Conditions apply. E. & O.E*

Updated 05Jun25/JC PCM: UGA - 9 day Gorillas & MFNP Scheduled RACK
WETU: 9 day Gorillas, Rhinos, Chimps & the Nile Scheduled Safari

WILD FRONTIERS
travel AFRICA

TANZANIA | UGANDA | KENYA | RWANDA | ZAMBIA | BOTSWANA | NAMIBIA | ZIMBABWE
VICTORIA FALLS MARATHON | KILIMANJARO MARATHON

For tailor made or scheduled tour requests, contact Wild Frontiers:
www.wildfrontiers.com