

# DARE TO EXPLORE WITH WILD FRONTIERS

*defining the difference in travel*



## Gorilla Express – Uganda

6 Day / 5 Night

***Gorillas, gorillas and a little game.....***

***This popular safari is aimed at those who are a little short on time, but nevertheless keen to see some game as well as gorillas on their safari. We have ample time to trek gorillas twice, as well as spending a night in Queen Elizabeth National park – enjoying some game viewing – before heading back to Entebbe.***

***On this safari we include your domestic flights – to save those long journeys by vehicle – but you will still have time to see some of the local culture, and beautiful forests on your safari.***

***Uganda boasts some of the best bird watching in Africa, with over 1000 different species, including the remarkable grey crowned crane and a host of endemic forest birds.***

***Luxury accommodation, professional guides and custom made safari vehicles make this safari the trip of a lifetime.***

## Quick Reference Itinerary

This is a hosted FLY-IN safari, with three nights at Bwindi for gorilla trekking, plus a night at ISHASHA WILDERNESS CAMP in QENP, and guests will fly rather than drive.

**This safari is guaranteed with minimum two guests**

	Activity & Accommodation option	Meal Plan	Notes & approx travelling times
Day 1	Entebbe – airport transfer. Boma Lodge, or similar.	BB	
Day 2	Transfer to the airport for your flight to Bwindi - overnight at Buhoma lodge or similar. Optional afternoon forest walk <b>or</b> cultural visit may be done (this may be undertaken on day 4 if guests prefer)	FB	Flight is approx. 1.5 hours, plus transfer to lodge of +/- 2 hours.
Day 3	Gorilla trekking, overnight Buhoma Lodge.	FB	Walking
Day 4	Option of forest walk or a <u>second trek</u> with pre-purchased permits. Optional community walk/forest walk/birding. Overnight Buhoma Lodge.	FB	Walking
Day 5	Today we travel to Ishasha allowing time to stop off at the local Ishasha Community project en route. Game drive in QENP, hoping to spot tree climbing lion, plus a myriad of other species in this beautiful park.	FB	Drive to Ishasha approx. 3 hours.  Plus game drives.
Day 6	Morning depart to airstrip for flight to Entebbe. On arrival transfer to town or to airport.  Additional accommodation may be booked on request. Ngamba Island recommended for a day visit or even overnight.	B	Flight approx. 1.5 hours.

***Please note that itinerary and accommodation may vary depending on availability. Your final itinerary will be confirmed at time of booking.***

## Detailed Itinerary

### 14 July 2017 : Day 1

On arrival at Entebbe International Airport you will be met by a Wild Frontiers representative and transferred to your hotel.

Entebbe is a small, quiet town located on the shores of Lake Victoria and is easy to explore on foot, boda bodas (local motorbike) or taxis. Soak up the local markets filled with clothes and crafts, shop for souvenirs in curio shops, or explore the Botanical Gardens on Lake Victoria. Enjoy the wide variety of restaurants serving many different cuisines as well as several bars and clubs where you can sample the local beer, catch a game of football and chat with the local Ugandans, known for their open, friendly nature.

Overnight at **Boma**, a small family run guest house.

[www.boma.co.ug](http://www.boma.co.ug)

## 15 July 2017 : Day 2

Transfer from Boma to the domestic airport for your scheduled flight to Kihhi airstrip, which is located between Bwindi/Queen Elizabeth National parks.

The flight takes just over an hour. Transfer to Buhoma Lodge, Bwindi Impenetrable Forest. The drive to the lodge is through local villages and mountain roads – lovely scenery and very interesting en route!

Guests will have the opportunity for two days of gorilla tracking (pre-booking essential). Other optional activities that may be enjoyed in and around the park include forest walks, visits to a local school or orphanage or Batwa pygmy village, and curio shopping.



Bwindi National Park, located in south western Uganda on the edge of the Great Rift Valley, is considered the most diverse forest in Uganda. Home to over 120 mammals, 345 species of birds, 200 species of butterflies, and 160 species of trees, Bwindi is one of the richest ecosystems in East Africa. The park contains almost one half of the world's population of the endangered Mountain Gorilla, making it an extremely valuable conservation site.

Overnight at **Buhoma Lodge** [www.ugandaexclusivecamps.com](http://www.ugandaexclusivecamps.com)

Situated on the slopes of the Forests of Bwindi, this intimate lodge offers uninterrupted views of the pristine rain forest canopy. It's the perfect, tranquil base from which to visit Bwindi.



## 16 July 2017 : Day 3

### Gorilla Tracking - Bwindi Impenetrable Forest National Park

Today will be a lifetime experience! Coming face to face with mountain gorillas is a rare wildlife encounter. Experienced guides and trackers will accompany your party on an early morning trek into the dense rain forest on the mountain slopes. The opportunity to come within meters of these magnificent apes, sharing in their daily lives and experiencing their day-to-day activities, is an experience you won't soon forget! Mountain gorillas are extremely rare with only an estimated 880 remaining in the wild. Please note that gorilla tracking may be fairly strenuous with treks ranging from 30 mins up to six hours or longer, at high altitudes. Also, mountain gorillas are wild animals and, as such, sightings cannot be guaranteed. However viewing success rates are over 95%.

Following the trek, return to your accommodation and, if time allows, take an optional guided afternoon forest or community walk.

#### **17 July 2017 : Day 4**

Those with pre-purchased permits will depart for a second gorilla tracking experience following breakfast at the lodge. Depending upon individual itinerary schedules, guests not tracking gorillas may wish to enjoy other activities available in the area such as a forest walk, a visit to a local school/orphanage/hospital, or Batwa pygmy village, and some local curio shopping.

#### **18 July 2017 : Day 5**

This morning we depart Bwindi Impenetrable Forest National Park and travel (2-3 hours) to Ishasha in the southern part of Queen Elizabeth National Park.

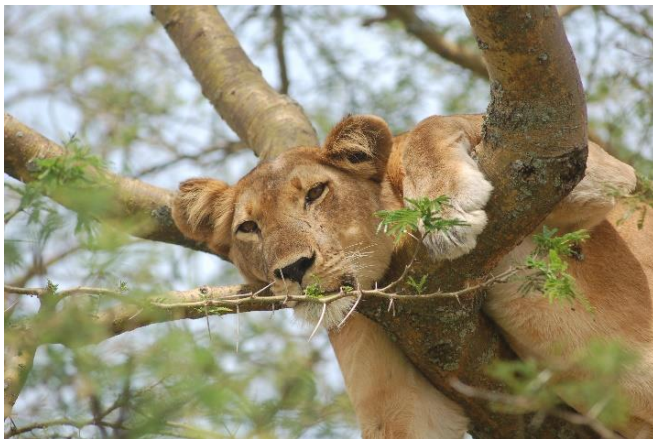
Time permitting, we may visit a Community Project enroute. Here the local people allow you to enjoy some time in their homesteads, as well as see some of the crops and curios they produce, and visit the local elephant trench project – which stops elephants coming into the village and raiding crops.

Afternoon game drives will be enjoyed in the Ishasha area, looking for the huge herds of buffalo, elephant, Uganda kob and of course the famous tree-climbing lion typically found in the area.



#### **Overnight at Ishasha Wilderness Camp**

[www.ugandaexclusivecamps.com](http://www.ugandaexclusivecamps.com)



This exclusive 10 tented camp offers the only luxury accommodation in the remote southern sector of Queen Elizabeth.

**Queen Elizabeth National Park** spreads over 1,978sq km in the western arm of the Great Rift Valley and is home to a wide variety of wildlife including elephants, leopard, lions, hippos, buffalo, Uganda kob, baboon, and many species of birds. With both a riverine and savannah habitat, the park includes the southern Ishasha area with the massive Maramagambo, one of the largest surviving natural forests in Uganda.

#### **19 July 2017 : Day 6**

Transfer to the airstrip for your return flight to Entebbe. Rest of the afternoon/evening is at leisure.

An airport transfer has been included, after your safari has been completed – from your Entebbe hotel, or directly after the safari.

**End of Safari.**

Optional overnight or additional tours may be organised for you. Please do not book an international flight out of Entebbe before 17h00 – preferably later – in case of delays.

**Optional add ons :**

Murchison Falls – River Nile, game drives, chimpanzee trekking, fishing, bird-watching. Need ideally 3-4 nights.

Jinja – Source of the Nile, adventure activities (rafting/bungi/quad bikes) 2-3 nights.

Entebbe/Kampala – city life, Lake Victoria, etc

Kibale – Chimpanzees and forest walks. Refer to our 10day safari option.

**PACKAGE PRICE :**

**USD 2 690 per person sharing**

**USD 490 single room supplement**

**Includes:**

- Airport transfers (Entebbe/return)
- Return domestic flights from Entebbe to Kihikihi on a scheduled flight (check at time of booking that airfare has not increased beyond our control)
- Transport with English speaking local driver/guide as above
- Accommodation and meals as above (full board on safari, bed and breakfast in Entebbe)
- Community visit en route from Bwindi to Ishasha
- Bottled water in safari vehicle
- Game drives in QENP Ishasha
- Full liability insurance cover
- 24 hour emergency contact

**Excludes:**

- **Gorilla Permit of USD600 per trek Bwindi – must be pre-booked/prepaid Optional extra of Forest Walk Bwindi (USD 75 pp including park fees)**
- Optional extra of Community Visit Bwindi (USD 35)
- Optional extra of Batwa Pygmies Community Visit (USD 85)
- Optional additional permits including trek transfer and facilitation USD 670 high/USD 520 low season
- All international flights and airport taxes
- Personal expenses such as porters, drinks, tips, visas and travel insurance
- Services/activities/meals not included above

***Please note - two gorilla trekking options are available on this itinerary. Please make your request at the time of booking.***



## BOOKINGS AND ENQUIRIES MAY BE MADE VIA BELOW:

### Websites:

- [www.wildfrontiers.com](http://www.wildfrontiers.com)
- [www.tanzaniawildernesscamps.com](http://www.tanzaniawildernesscamps.com)
- [www.kilimanjaromarathon.com](http://www.kilimanjaromarathon.com)
- [www.vicfallsmarathon.com](http://www.vicfallsmarathon.com)
- [www.vicfallsmtbchallenge.com](http://www.vicfallsmtbchallenge.com)
- [www.ugandaexclusivecamps.com](http://www.ugandaexclusivecamps.com)

### Contact:

Wild Frontiers PTY (LTD.) - HEAD OFFICE - Johannesburg

Tel: +27 11 702 2035

Fax: +27 86 689 6159

Central Reservations: [reservations@wildfrontiers.com](mailto:reservations@wildfrontiers.com)

Members of: ATTA / AUTO / TATO

### © Copyright WILD FRONTIERS 2017

*Copyright and database rights protection exists in this publication and all rights are reserved. The document is furthermore provided for the information of WILD FRONTIERS' clients only. This publication or any part thereof may not be reproduced, transmitted, conveyed, communicated or used in any form or by any means, whether in whole or in part, without the prior written permission of WILD FRONTIERS. All business is conducted in terms of our Standard Terms and Conditions, the full text of which is available at [www.wildfrontiers.com](http://www.wildfrontiers.com) or on request from our offices. All clients doing business with Wild Frontiers (Pty) Ltd will be deemed to have read and accepted to be bound by our Standard Terms and Conditions*

E. & O.E. JC/Mar17 UGA Scheduled 6 day 2017 RACK